

2002 Framework Agreement

Growth Management Act Steering Committee

Growth Management Act Technical Advisory Committee

May 30, 2018

Statutory Background – RCW 36.70A.210

(1) The legislature recognizes that counties are regional governments within their boundaries, and cities are primary providers of urban governmental services within urban growth areas. For the purposes of this section, **a "countywide planning policy" is a written policy statement or statements used solely for establishing a countywide framework from which county and city comprehensive plans are developed and adopted** pursuant to this chapter. This framework shall ensure that city and county comprehensive plans are consistent as required in RCW 36.70A.100. Nothing in this section shall be construed to alter the land-use powers of cities.

(Emphasis Added)

Statutory Background – RCW 36.70A.210

(2) The legislative authority of a county that plans under RCW 36.70A.040 shall adopt a countywide planning policy in cooperation with the cities located in whole or in part within the county as follows:

(a) No later than sixty calendar days from July 16, 1991, the legislative authority of each county that as of June 1, 1991, was required or chose to plan under RCW 36.70A.040 shall convene a meeting with representatives of each city located within the county for the purpose of **establishing a collaborative process that will provide a framework for the adoption of a countywide planning policy**. In other counties that are required or choose to plan under RCW 36.70A.040, this meeting shall be convened no later than sixty days after the date the county adopts its resolution of intention or was certified by the office of financial management.

(b) The process and framework for adoption of a countywide planning policy specified in (a) of this subsection **shall determine the manner in which the county and the cities agree to all procedures and provisions including but not limited to desired planning policies**, deadlines, ratification of final agreements and demonstration thereof, and financing, if any, of all activities associated therewith.

(Emphasis Added)

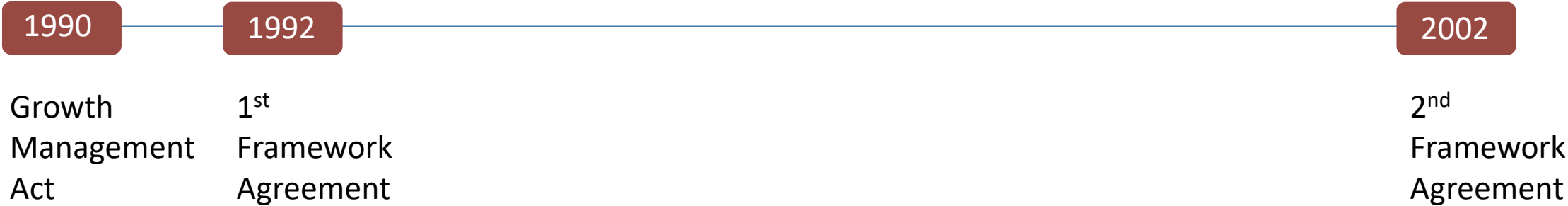
Statutory Background – RCW 36.70A.210

(3) A countywide planning policy shall at a minimum, address the following:

- (a) Policies to **implement** RCW 36.70A.110 (**Comprehensive plans—Urban growth areas**);
- (b) Policies for **promotion of contiguous and orderly development and provision of urban services** to such development;
- (c) Policies for **siting public capital facilities** of a countywide or statewide nature, including transportation facilities of statewide significance as defined in RCW 47.06.140;
- (d) Policies for **countywide transportation facilities and strategies**;
- (e) Policies that consider the need for **affordable housing**, such as housing for all economic segments of the population and parameters for its distribution;
- (f) Policies for **joint county and city planning within urban growth areas**;
- (g) Policies for **countywide economic development and employment**, which must include consideration of the future development of commercial and industrial facilities; and
- (h) An **analysis of the fiscal impact**.

(Emphasis Added)

Timeline of Framework Agreements



Parties to 2002 Framework Agreement

- ✓ Skagit County
- ✓ Anacortes
- ✓ Burlington
- ✓ Mount Vernon
- ✓ Sedro-Woolley
- ✓ Concrete
- ✓ Hamilton
- ✓ La Conner
- ✓ Lyman

Skagit Council of Governments is not a party to 2002 Framework Agreement but provides staffing services under a 2015 interlocal agreement between Framework Agreement parties and SCOG.

WHEREAS Examples from 2002 Framework Agreement

- WHEREAS, a Framework Agreement is necessary to set out the agreed upon procedures by which the CPPs will be developed and adopted; and
- WHEREAS, these jurisdictions used the [1992] Framework Agreement to reach agreement in 1992 on a set of CPPs, and subsequently amended those CPPs in 1996; and
- WHEREAS, these jurisdictions have all adopted comprehensive plans and development regulations pursuant to GMA requirements and those CPPs; and
- WHEREAS, the parties find that the most efficient and effective use of resources...may be better achieved by a new organizational structure than that established by the 1992 Framework Agreement; and
- WHEREAS, the parties...conclude it to be in the best interest of the citizens to rescind the [1992 Framework Agreement]...and adopt...the 2002 Framework Agreement.

GMA Committee Primary Functions

The GMA Committee is a planning organization cooperatively supported by Cities, Towns and Skagit County with the following six primary functions:

1. Develop, as appropriate, policies for transportation, growth management, environmental quality, and other topics determined by the GMA Committee's Steering Committee;
2. Provide agreed and accepted data and analysis to support local and regional decision making;
3. Build community consensus on regional issues through information, and citizen involvement at the local level;
4. Build intergovernmental consensus on regional plans, policies and issues, and advocate for local implementation;
5. Establish a mechanism to systematically and logically update the CPPs as necessary; and
6. Develop procedures for siting regional essential public facilities that includes regional input.

GMA Committee Structure

Steering Committee (elected)

Skagit County	3
Anacortes	1
Burlington	1
Mount Vernon	1
Sedro-Woolley	1
Concrete	1
Hamilton	1
La Conner	1
Total	10



Technical Advisory Committee (staff)

Skagit County	3
Anacortes	1
Burlington	1
Mount Vernon	1
Sedro-Woolley	1
Concrete	1
Hamilton	1
La Conner	1
Total	10

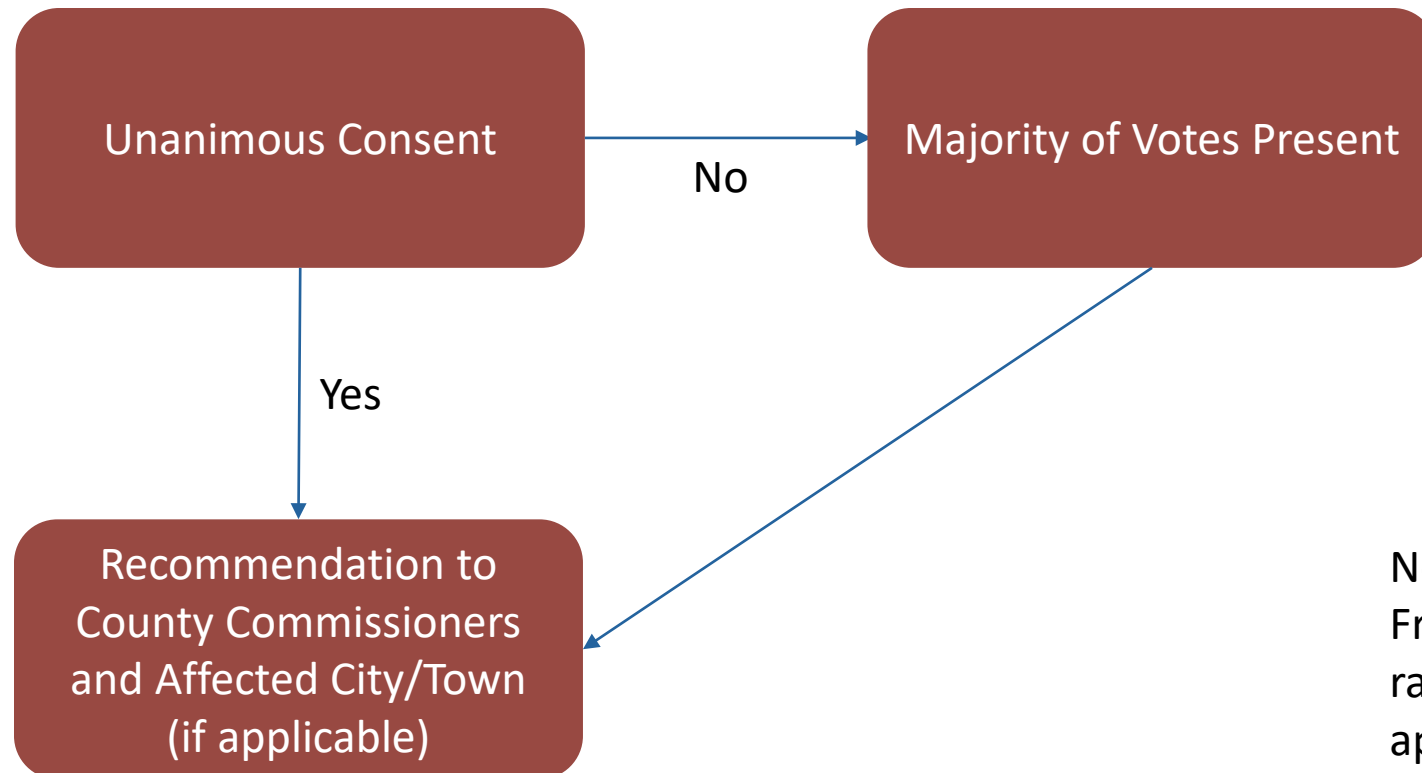
Steering Committee Recommendations

The Steering Committee is the recommending authority to Board of County Commissioners for:

1. Countywide Planning Policies
2. Urban Growth Areas
3. Residential, commercial and industrial allocations

Steering Committee Decision Tree

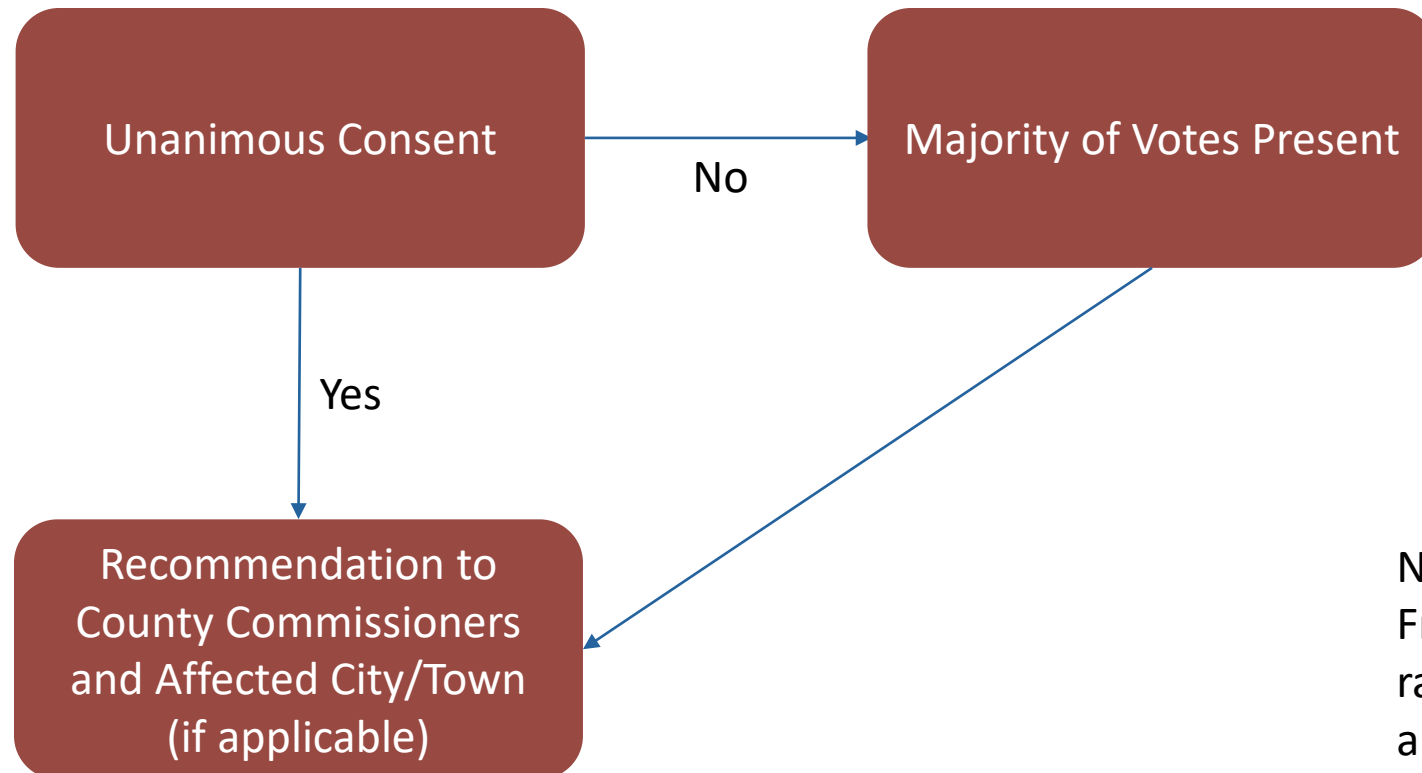
Urban Growth Areas:



Notes: (1) unanimous consent preferred in 2002 Framework Agreement, but not required; and (2) ratification required by County and City/Town (if applicable) to take effect.

Steering Committee Decision Tree

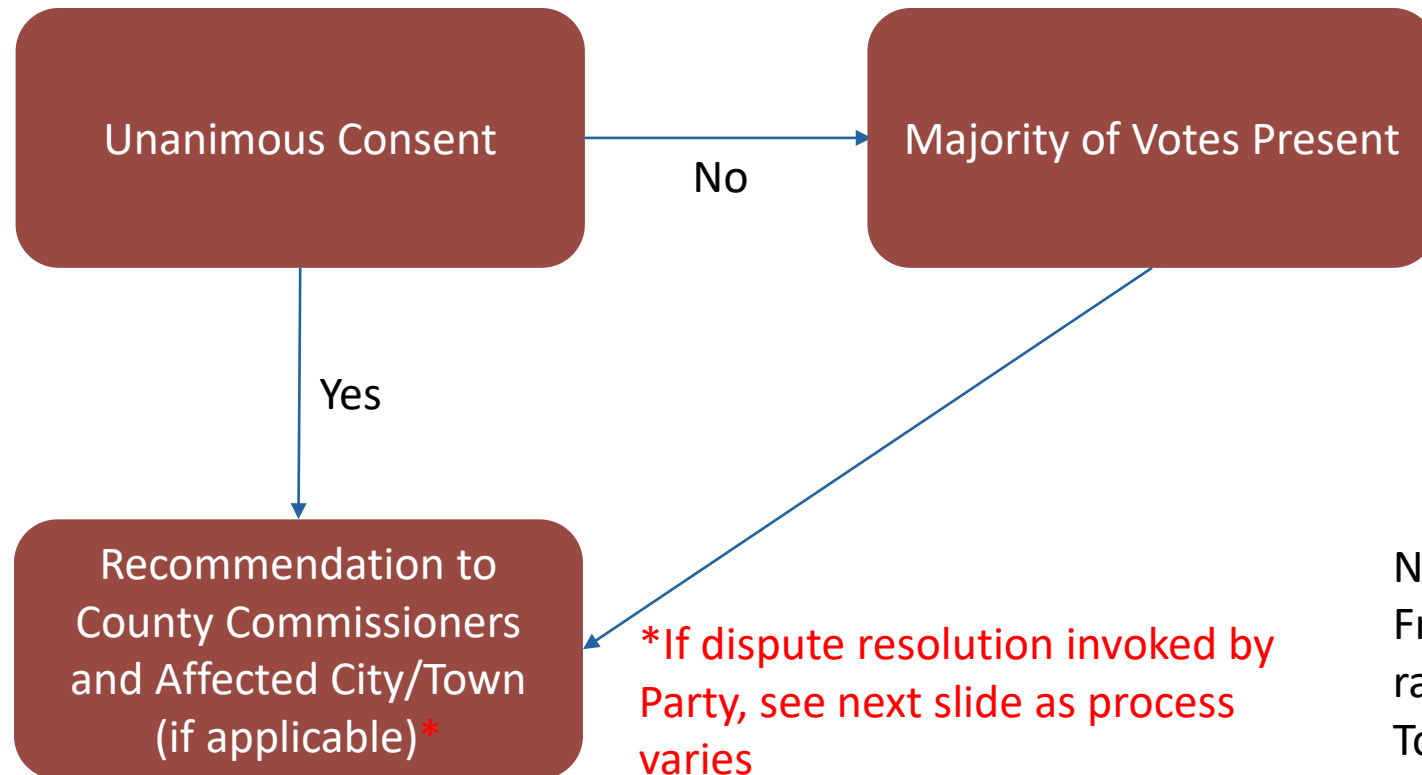
Population and Industrial/Commercial Allocations:



Notes: (1) unanimous consent preferred in 2002 Framework Agreement, but not required; and (2) ratification required by County and City/Town (if applicable) to take effect.

Steering Committee Decision Tree

Countywide Planning Policies:



Notes: (1) unanimous consent preferred in 2002 Framework Agreement, but not required; and (2) ratification required by County and all Cities & Towns (except Lyman) to take effect.

Steering Committee Decision Tree

Countywide Planning Policies (with dispute resolution process):

Dispute Begins

Notice of Dispute by Party to Steering Committee Chair

60 Days to Resolve Dispute

Resolved

Unresolved

Dispute Resolution Process Not Invoked

Dispute Resolution Process Invoked

Mediation

Mediator Selected, Rules and Location Established

Success

Issue Resolved by Acceptable Settlement within 90 Days

Failure

Population Weighted Vote

Final Binding Vote

75% of Total Votes Present + 60% of Jurisdictions Present Required to Pass Recommendation

Population Weighted Votes*:

Skagit County	50,875
Anacortes	16,780
Burlington	8,715
Concrete	740
Hamilton	300
La Conner	925
Mount Vernon	34,360
Sedro-Woolley	10,950

*Note: population from most recent OFM estimates per 2002 Framework Agreement

County Commissioners CPP Action

Board of County Commissioners has the discretion to:

- (1) Adopt any new CPP or CPP amendment proposed by the Steering Committee, but may not change the proposed CPP or CPP amendment in any manner whatsoever; or
- (2) Decline to adopt any new CPP or CPP amendment proposed by the Steering Committee.

2002 Framework Agreement Misc.

- The agreement has withdrawal procedures, which includes 60 days written notice to the other parties
- The agreement may be terminated by unanimous vote of the parties
- Notices permitted or required by the agreement need to go through the United States Postal Service, registered or certified mail, return receipt requested
- At least one Steering Committee meeting per year required
- Minutes required for all Steering Committee meetings
- Steering Committee chair and vice chair – one each from County and City/Town
- Majority of members constitutes a Steering Committee quorum
- Steering Committee to balance any competing interests that arise from member jurisdictions public participation processes when making policy recommendations – does not replace other public participation processes