



MOVE SKAGIT



Move Skagit 2050 Appendix D: Fish Passages

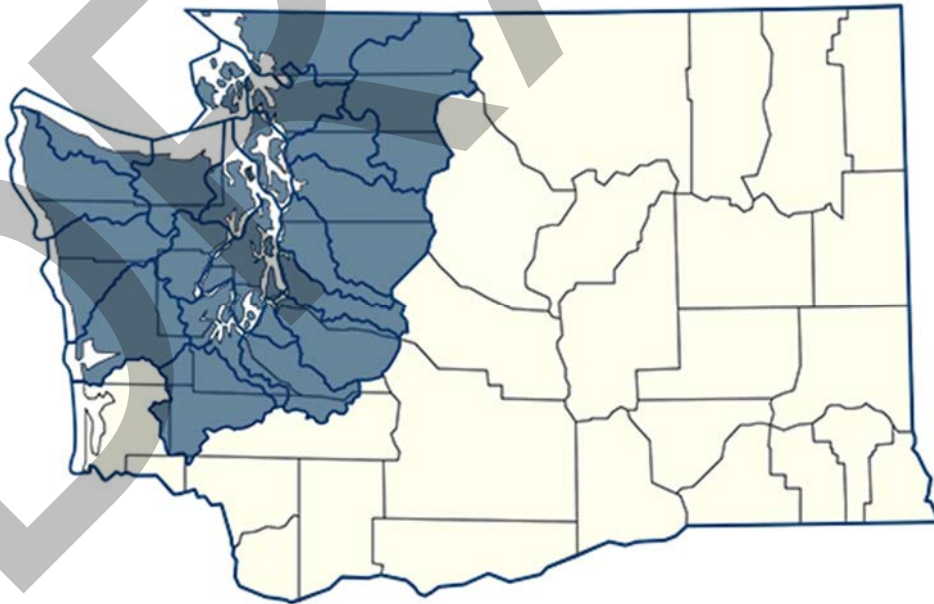
Fish Passages

Barriers to fish passage are numerous in the Skagit region and are being corrected in accord with a federal injunction applying to much of western Washington state. The federal injunction requires that the Washington State Department of Transportation correct barriers to fish passage in the Skagit region, along Interstate 5 and state routes that provide the backbone of the regional transportation system. The correction of fish passages is an area of emphasis in the Move Skagit 2050 Regional Transportation Plan.

The federal court injunction, issued in March 2013, requires WSDOT to correct fish-passage barriers that block habitat to salmon and steelhead by 2030. In addition to WSDOT, the injunction affects the departments of natural resources, fish and wildlife, and the parks and recreation commission.

Based on the latest available information from WSDOT, as of June 2025, there are 974 culverts this injunction applies to across the injunction area and 774 of these have the highest potential for significant habitat gain.

The affected geographic area for the federal fish passage injunction is shaded on the following map. The map also displays political boundaries for Washington's 39 counties, and Water Resource Inventory Areas for the state.



Source: Washington State Department of Transportation

Examples of Fish Passage Barrier Correction

Following are before-and-after pictures from fish barrier corrections in the Skagit region. One is from State Route 20 near Rockport (Skagit River), and the other is east of Rockport, along State Route 20 (Olson Creek).

Tributary to Skagit River

Before



After



Olson Creek

Before



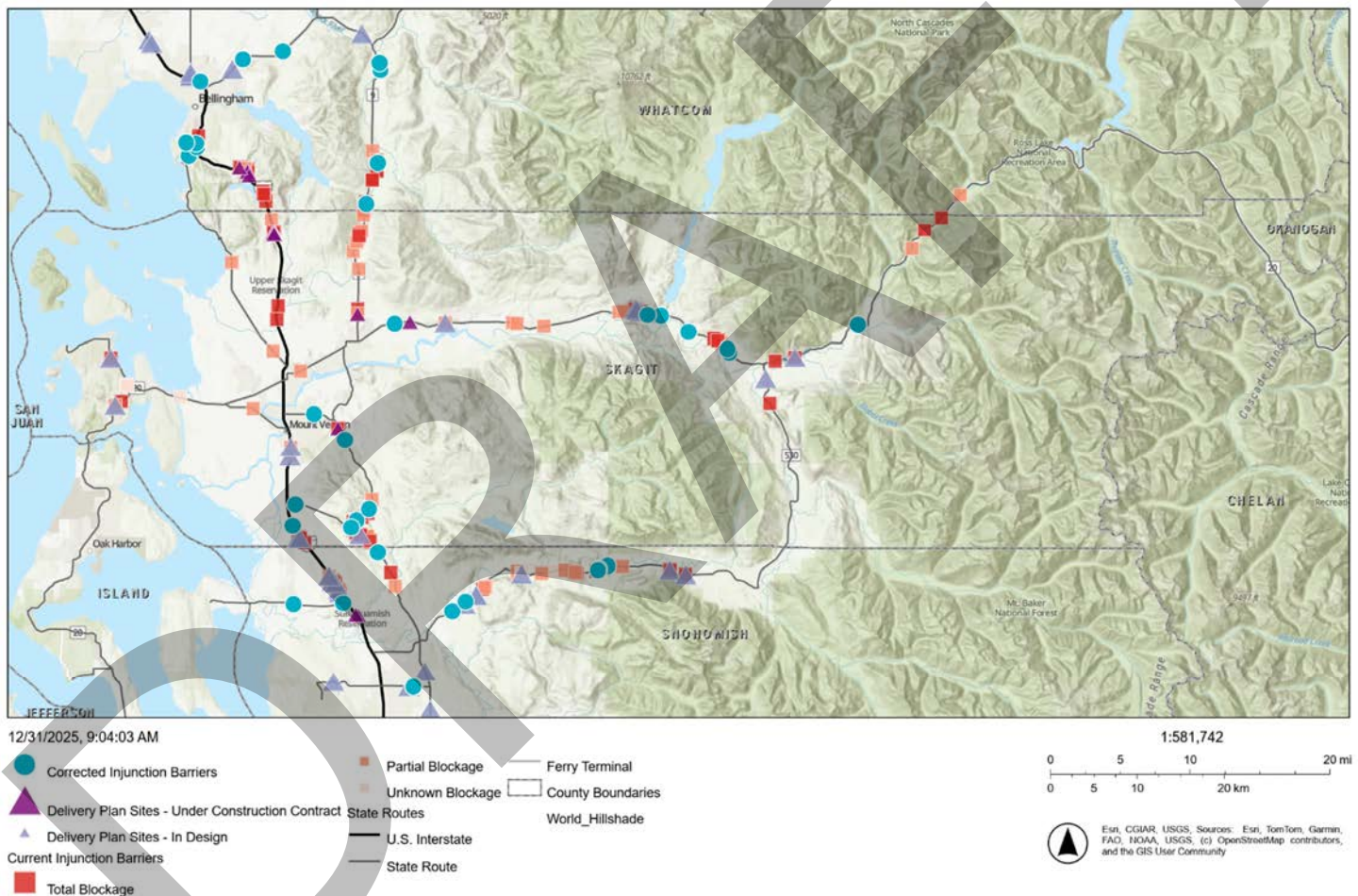
After

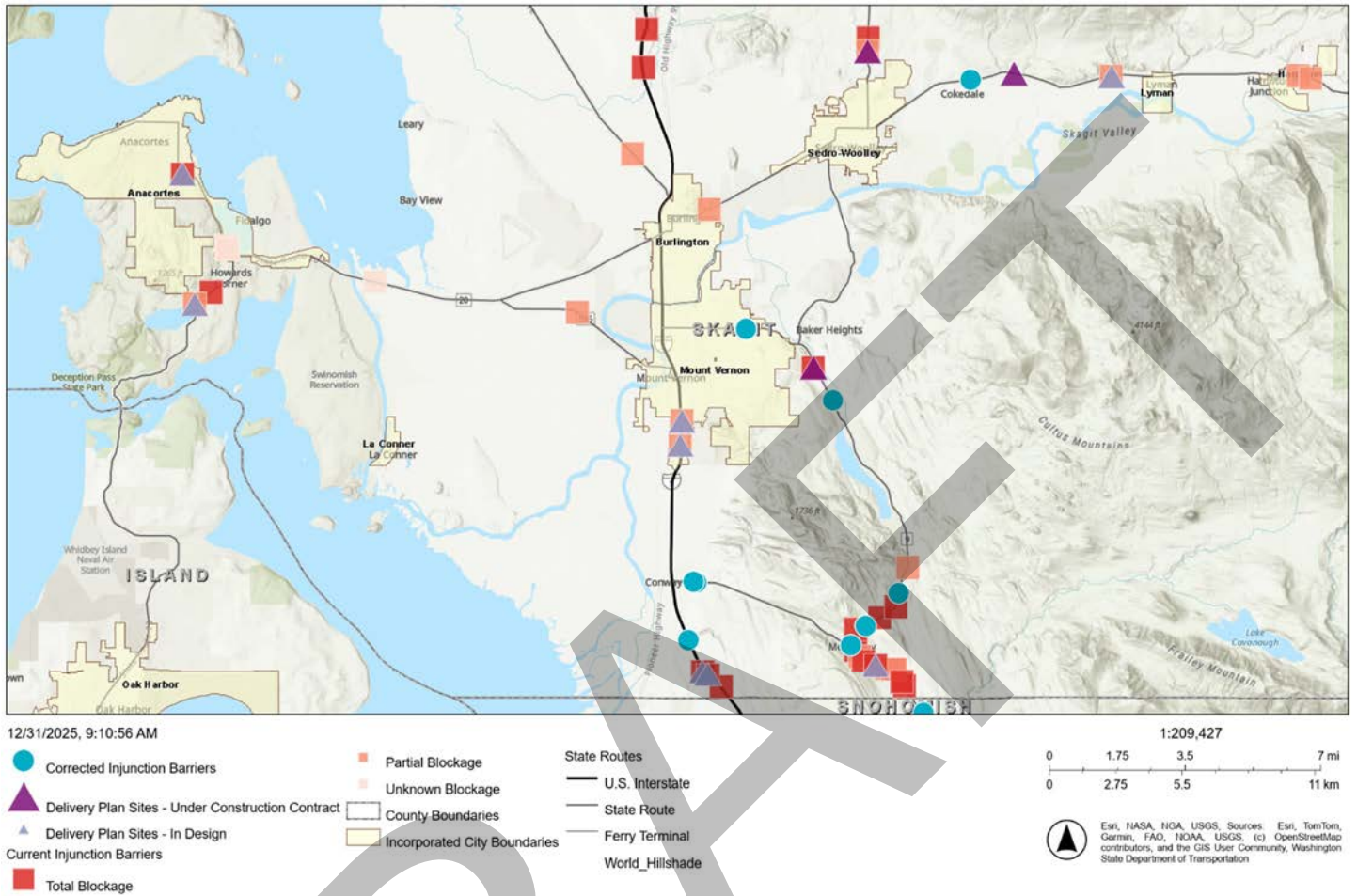


Source: Washington State Department of Transportation

Fish Passages in the Skagit Region

Fish-passage barriers subject to the federal injunction are included on the following map. In the Skagit region, 15 of these injunction barriers have been corrected. Correction of the remaining barriers should open approximately 90% of habitat blocked by fish-passage barriers, consistent with the federal injunction. Additional barriers to fish passage can be corrected at the end of their useful life. The maps display expected habitat gain for some barriers, and also indicates which barriers are in the design or construction phases as of December 2025. Prioritization of the uncorrected barriers may change between 2025 and 2030, as WSDOT continues to correct these barriers to passage of salmon and steelhead in the Skagit region.





Source: WSDOT Fish Passage Inventory ([Fish passage maps & data | WSDOT](#))