
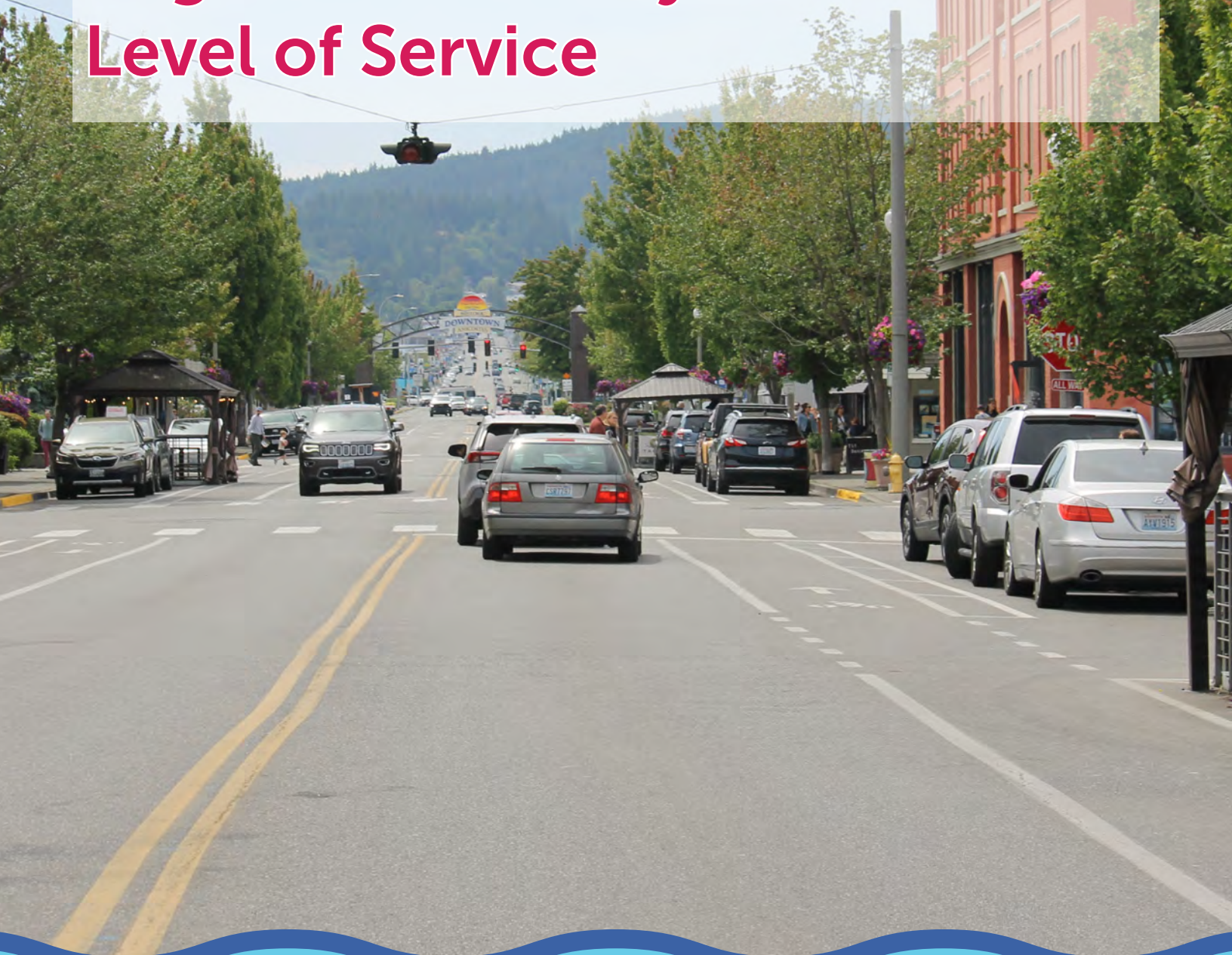




# MOVE SKAGIT



## Move Skagit 2050 Appendix H: Regional Roadway Volumes and Level of Service



# Volume and Level of Service

Regional roadway system performance for major roadways in the Skagit region is described in Table 1 below. The table provides a summary of traffic measures that describe the performance of the regional roadway system for passenger and freight travel, as well as other travel modes with existing or future connections to the roadway. Traffic data includes existing traffic volumes, forecasted traffic volumes/growth, freight travel and LOS along certain sections of each regional roadway. Maps indicating traffic volumes and LOS on roadways in the Skagit region are shown in Figures 1 through 8.

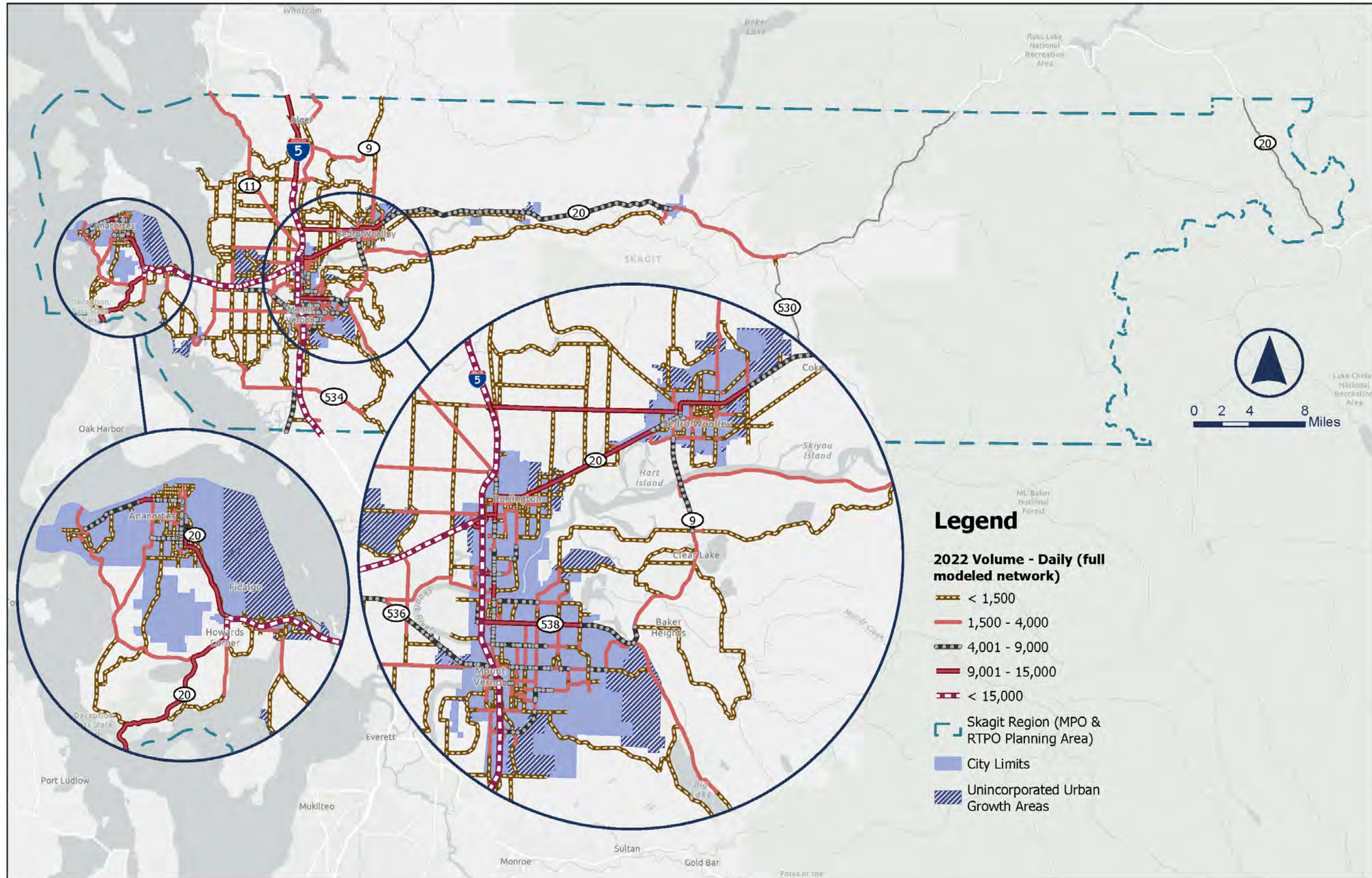
Table 1. Regional Roadways

ROADWAY	EXISTING TRAFFIC VOLUMES (Daily; 2022) and LOS (PM Peak Hour)	FORECAST TRAFFIC VOLUMES (Daily) and LOS (PM Peak Hour) 2050 – BASELINE (FUNDED)	FORECAST TRAFFIC VOLUMES (Daily) and LOS (PM Peak Hour) 2050 - PLANNED	FORECAST TRAFFIC VOLUMES (Daily) and LOS (PM Peak Hour) 2050 - ILLUSTRATIVE	FREIGHT TRAVEL	OTHER MODES
<b>Interstate 5: Connects the Skagit region north–south between Snohomish and Whatcom Counties; serves as the primary corridor for people and freight.</b>						
I-5 Rural South (I-5 South External to Old Highway 99)	Volume: 29,300 VPD LOS: B	Volume: 29,500 VPD LOS: B	Volume: 29,500 VPD LOS: B	Volume: 29,500 VPD LOS: B	<ul style="list-style-type: none"> <li>• South of SR 20: T-1 truck corridor; 33 M tons/yr; 9% truck traffic</li> <li>• North of SR 20: T-1 truck corridor; 17 M tons/yr; 7% truck traffic</li> </ul>	<ul style="list-style-type: none"> <li>• Barrier to east–west non-motorized travel</li> <li>• Tammi Wilson Memorial Trail provides crossing under I-5</li> <li>• U.S. Bicycle Route 95 parallels I-5</li> </ul>
I-5 Urban Mount Vernon (Old Highway 99 to Skagit River)	Volume: 31,800 VPD LOS: B	Volume: 33,700 VPD LOS: B	Volume: 33,800 VPD LOS: B	Volume: 33,700 VPD LOS: B		
I-5 Urban Burlington (Skagit River to Cook Road)	Volume: 31,700 VPD LOS: B	Volume: 32,500 VPD LOS: B	Volume: 32,500 VPD LOS: B	Volume: 32,500 VPD LOS: B		
I-5 Rural North (Cook Road to Cook Road)	Volume: 22,000 VPD LOS: B	Volume: 22,000 VPD LOS: B	Volume: 22,000 VPD LOS: B	Volume: 22,000 VPD LOS: B		
<b>State Route 20 - Connects Skagit region to I-5 and destinations east and west, serving both rural and urban transportation needs.</b>						
State Route 20 Spur route (Anacortes Ferry Terminal to Sharpes Corner)	Volume: 10,200 VPD LOS: C	Volume: 11,200 VPD LOS: C	Volume: 11,200 VPD LOS: C	Volume: 11,200 VPD LOS: C	<ul style="list-style-type: none"> <li>• Anacortes to SR 536: T-2 truck corridor; 8 M tons/yr; 6% truck traffic</li> <li>• Sharpe’s Corner South: T-2 truck corridor; 4 M tons/yr; 6% truck traffic</li> <li>• SR 536 to Avon Ave: T-2 truck corridor; 8 M tons/yr; 8% truck traffic</li> <li>• Avon Ave to SR 9: T-3 truck corridor; 3 M tons/yr; 5% truck traffic</li> </ul>	<ul style="list-style-type: none"> <li>• U. S. Bicycle Route 10, 97, and 610 segments; Cascade Trail parallels SR 20 east of Sedro-Woolley</li> <li>• Skagit Transit routes serving Anacortes, La Conner, Mounty Vernon, Burlington, Sedro Woolley, Lyman, Hamilton, Concrete</li> </ul>
State Route 20 Rural route (Deception Pass to Gibraltar Road)	Volume: 18,000 VPD LOS: D	Volume: 18,100 VPD LOS: D	Volume: 18,100 VPD LOS: D	Volume: 18,100 VPD LOS: D		
State Route 20 Urban route (Gibraltar Road to Swinomish Channel)	Volume: 29,700 VPD LOS: C	Volume: 31,800 VPD LOS: C	Volume: 31,800 VPD LOS: C	Volume: 31,800 VPD LOS: C		

ROADWAY	EXISTING TRAFFIC VOLUMES (Daily; 2022) and LOS (PM Peak Hour)	FORECAST TRAFFIC VOLUMES (Daily) and LOS (PM Peak Hour) 2050 – BASELINE (FUNDED)	FORECAST TRAFFIC VOLUMES (Daily) and LOS (PM Peak Hour) 2050 - PLANNED	FORECAST TRAFFIC VOLUMES (Daily) and LOS (PM Peak Hour) 2050 - ILLUSTRATIVE	FREIGHT TRAVEL	OTHER MODES
State Route 20 Rural route (Swinomish Channel to Pulver Road)	Volume: 31,500 VPD LOS: C	Volume: 34,900 VPD LOS: C	Volume: 34,700 VPD LOS: C	Volume: 34,800 VPD LOS: C	<ul style="list-style-type: none"> <li>SR 9 to SR 530: T-3 truck corridor; 2 M tons/yr; 9% truck traffic</li> <li>SR 530 to Whatcom County line: T-3 truck corridor; 0.5 M tons/yr; 8% truck traffic</li> <li>Whatcom County line to Chelan County line: T-3 truck corridor; 0.5 M tons/yr; 8% truck traffic</li> </ul>	
State Route 20 Burlington Sedro-Woolley route (Pulver Road to Helmick Road)	Volume: 16,200 VPD LOS: D	Volume: 19,100 VPD LOS: F	Volume: 19,200 VPD LOS: F	Volume: 19,000 VPD LOS: F		
State Route 20 Rural East route (Helmick Road to SR 20 East External)	Volume: 7,900 VPD LOS: C	Volume: 9,300 VPD LOS: C	Volume: 9,300 VPD LOS: C	Volume: 9,300 VPD LOS: C		
State Route 9 - North-south rural corridor connecting SR 534 and SR 20 in Sedro-Woolley; primary route to Clear Lake and northern Skagit Valley.						
State Route 9 Rural South (SR 9 South External to SR 538/College Way)	Volume: 2,900 VPD LOS: C	Volume: 3,200 VPD LOS: C	Volume: 3,200 VPD LOS: C	Volume: 3,200 VPD LOS: C	<ul style="list-style-type: none"> <li>SR 20 to Whatcom County line: T-3 truck corridor; 3 M tons/yr; 17% truck traffic</li> <li>SR 20 to West Big Lake Boulevard: T-3 truck corridor; 1 M tons/yr; 6% truck traffic</li> <li>West Big Lake Boulevard to Snohomish County Line: T-3 truck corridor; 1 M ton/yr; 8% truck traffic</li> </ul>	<ul style="list-style-type: none"> <li>Recreational cycling corridor</li> <li>U.S. Bicycle Route 87</li> <li>Centennial Trail extension planned</li> <li>Skagit Transit operates route 305 between Mount Vernon and Sedro-Woolley</li> </ul>
State Route 9 Rural Middle (SR 538/College Way to Skagit River)	Volume: 5,700 VPD LOS: C	Volume: 7,100 VPD LOS: C	Volume: 7,000 VPD LOS: C	Volume: 7,000 VPD LOS: C		
State Route 9 Urban (Skagit River to Kalloch Road)	Volume: 10,600 VPD LOS: D	Volume: 11,900 VPD LOS: D	Volume: 11,800 VPD LOS: D	Volume: 11,700 VPD LOS: D		
State Route 9 Rural North (Kalloch Road to SR 9 External)	Volume: 2,200 VPD LOS: C	Volume: 2,500 VPD LOS: C	Volume: 2,400 VPD LOS: C	Volume: 2,400 VPD LOS: C		
State Route 536 - Connects downtown Mount Vernon to west county and SR 20; urban and rural segments serving commuters and freight; crosses the Skagit River and provides a critical regional connection across the river.						
State Route 536 Rural (SR 20 to Valley View Drive)	Volume: 6,900 VPD LOS: C	Volume: 7,100 VPD LOS: C	Volume: 7,400 VPD LOS: C	Volume: 7,100 VPD LOS: C	<ul style="list-style-type: none"> <li>I-5 to 1st Street: T-3 truck corridor; 2M tons/yr; 5% truck traffic</li> </ul>	<ul style="list-style-type: none"> <li>Skagit Transit 40x route</li> <li>Access to Skagit Station (Amtrak and intercity bus)</li> </ul>

ROADWAY	EXISTING TRAFFIC VOLUMES (Daily; 2022) and LOS (PM Peak Hour)	FORECAST TRAFFIC VOLUMES (Daily) and LOS (PM Peak Hour) 2050 – BASELINE (FUNDED)	FORECAST TRAFFIC VOLUMES (Daily) and LOS (PM Peak Hour) 2050 - PLANNED	FORECAST TRAFFIC VOLUMES (Daily) and LOS (PM Peak Hour) 2050 - ILLUSTRATIVE	FREIGHT TRAVEL	OTHER MODES
State Route 536 Urban (Valley View Drive to I-5 at Kincaid)	Volume: 8,500 VPD LOS: C	Volume: 9,200 VPD LOS: D	Volume: 9,400 VPD LOS: D	Volume: 9,100 VPD LOS: D	<ul style="list-style-type: none"> <li>1st Street to Wall Street: T-3 truck corridor; 4 M tons/yr; 6% truck traffic</li> <li>Wall Street to SR 20: T-3 truck corridor; 1 M tons/yr; 5% truck traffic.</li> </ul>	<ul style="list-style-type: none"> <li>Proposed non-motorized improvements to West Division Bridge</li> <li>Skagit Riverwalk provides crossing under SR 536</li> </ul>
State Route 538 (College Way) - East-west urban arterial linking SR 9 to I-5 through Mount Vernon.						
State Route 538 College Way Urban (I-5 to SR 9)	Volume: 18,500 VPD LOS: D	Volume: 19,800 VPD LOS: D	Volume: 19,600 VPD LOS: D	Volume: 19,600 VPD LOS: D	<ul style="list-style-type: none"> <li>I-5 to Laventure Road: T-3 truck corridor; 3 M tons/yr; 4% truck traffic</li> <li>Laventure Road to SR 9: T-3 truck corridor; 2 M tons/yr; 5%</li> </ul>	<ul style="list-style-type: none"> <li>Kulshan Trail parallel route</li> <li>Skagit Transit serves Skagit Valley College and has multiple routes along SR 538</li> </ul>
State Route 11 (Chuckanut Drive) - Scenic corridor connecting Bow Hill Road and I-5 to Whatcom County border along the coast; Designated as a State Scenic Byway.						
State Route 11 Rural Chuckanut Drive (Burlington Blvd/Josh Wilson Road to SR 11 External)	Volume: 4,600 VPD LOS: C	Volume: 5,000 VPD LOS: C	Volume: 5,000 VPD LOS: C	Volume: 5,000 VPD LOS: C	<ul style="list-style-type: none"> <li>I-5 to Avon Allen Road: T-3 truck corridor; 1 M tons/yr; 7% truck traffic</li> <li>Avon Allen Road to Whatcom Co. Line: T-3 truck corridor; .5 M tons/yr; 4% truck traffic</li> </ul>	<ul style="list-style-type: none"> <li>State Scenic Byway supporting recreational activities and bicycling.</li> </ul>

Figure 1. 2022 Volumes (Daily)



**Legend**

**2022 Volume - Daily (full modeled network)**

- < 1,500
- 1,500 - 4,000
- 4,001 - 9,000
- 9,001 - 15,000
- < 15,000
- Skagit Region (MPO & RTPO Planning Area)
- City Limits
- Unincorporated Urban Growth Areas

Figure 2. 2022 LOS (PM Peak Hour)

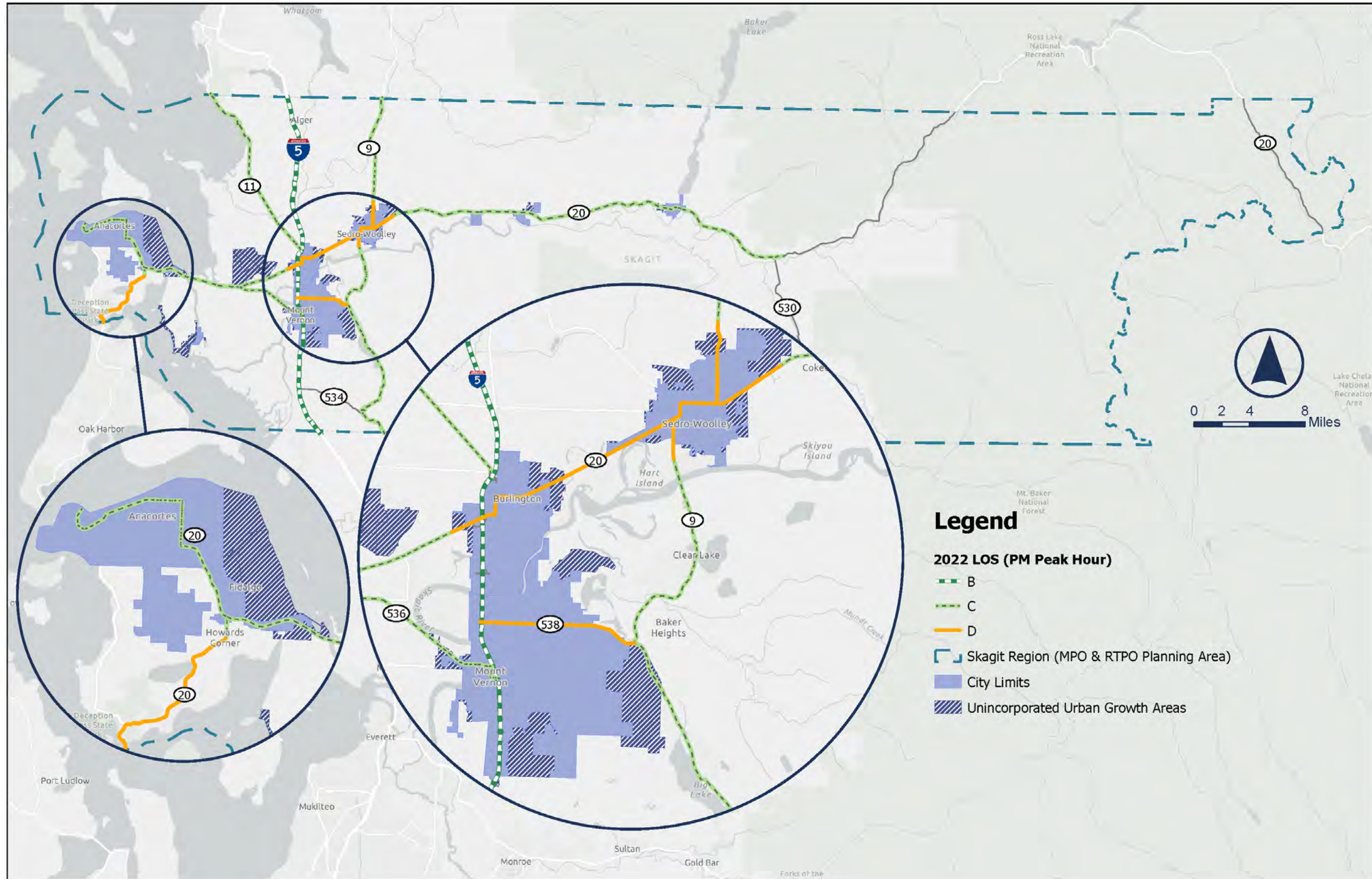


Figure 3. 2050 (Funded) Volumes (Daily)

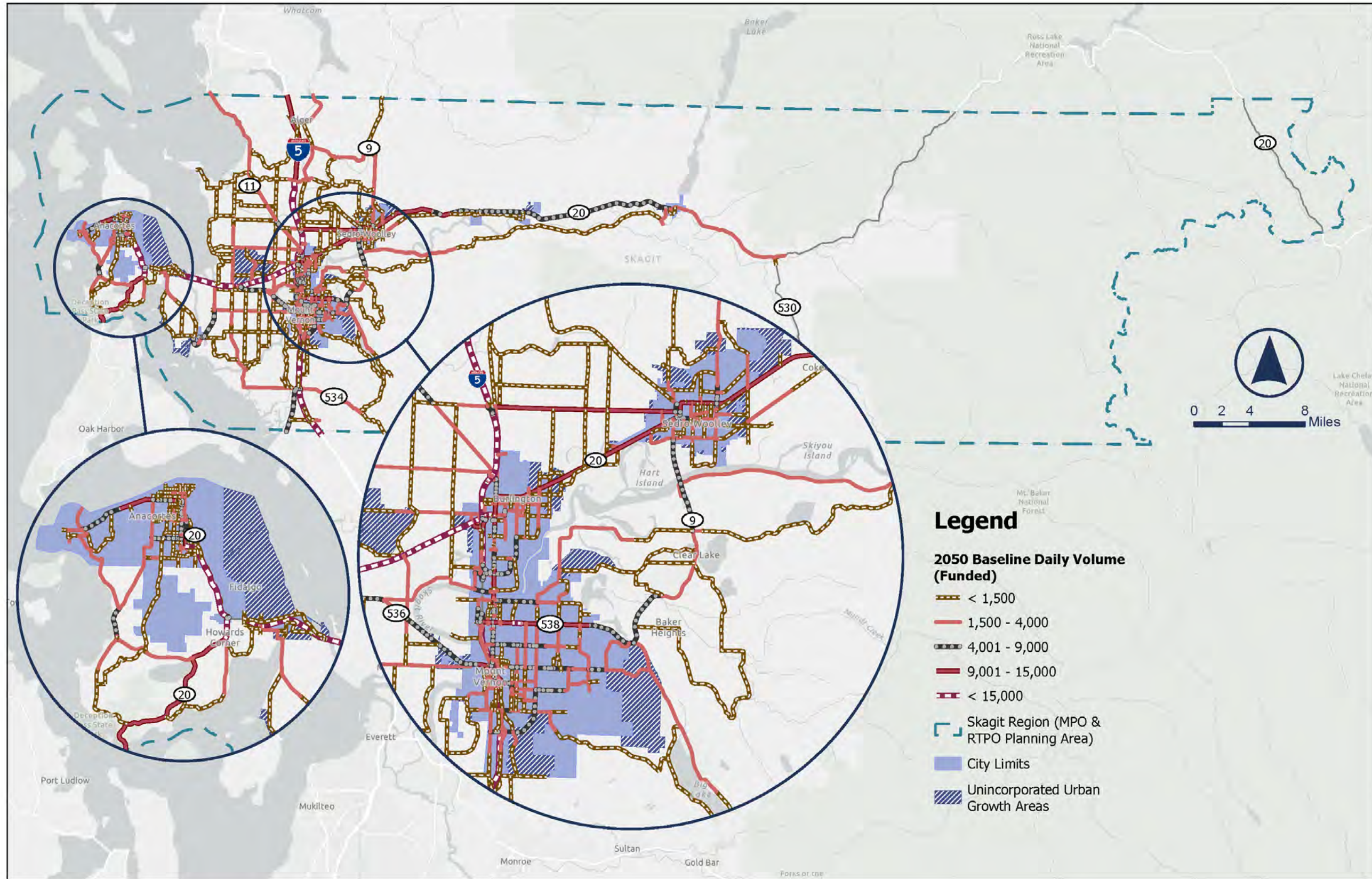


Figure 4. 2050 (Funded) LOS (PM Peak Hour)

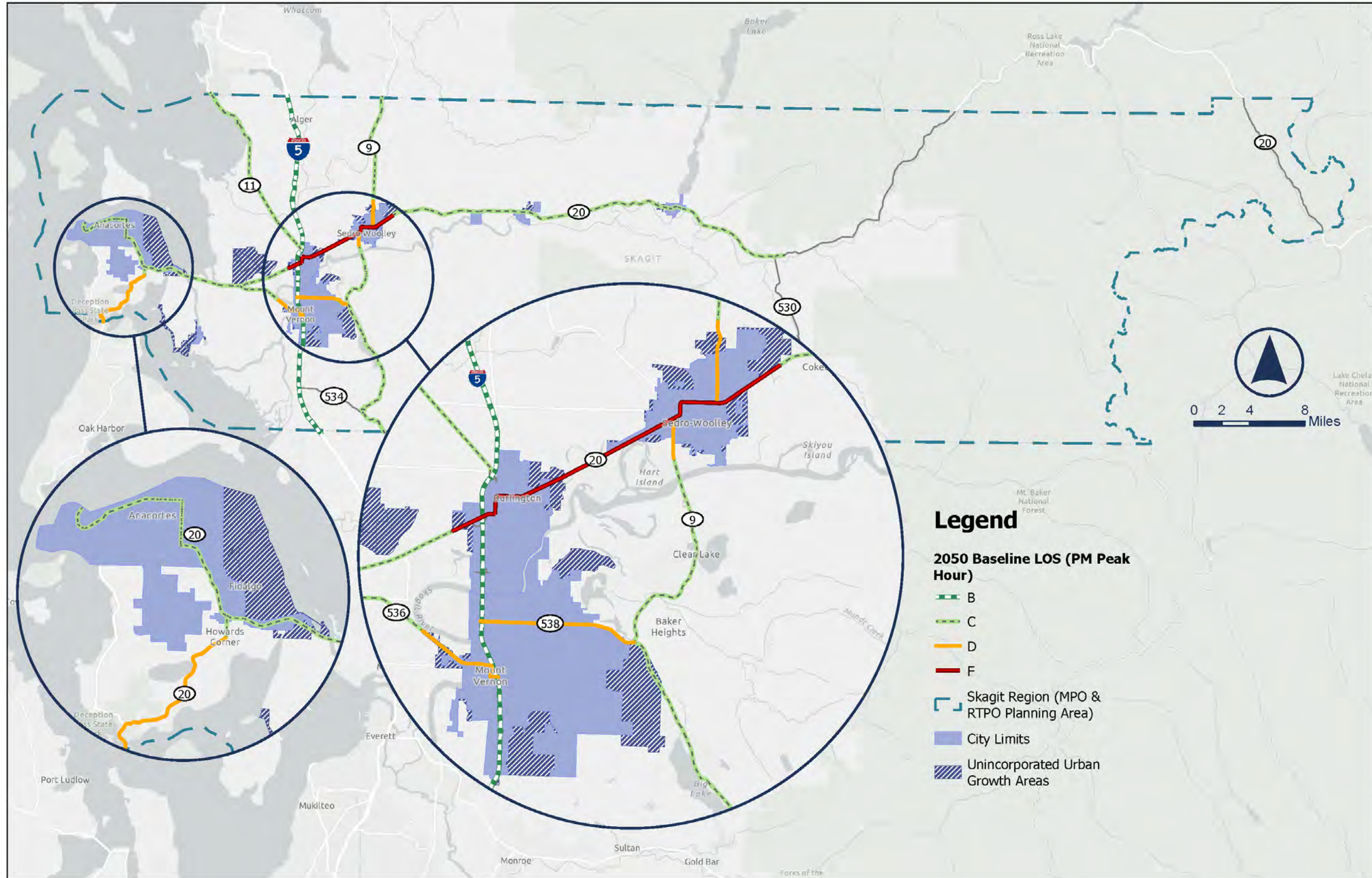


Figure 5. 2050 (Planned) Volumes (Daily)

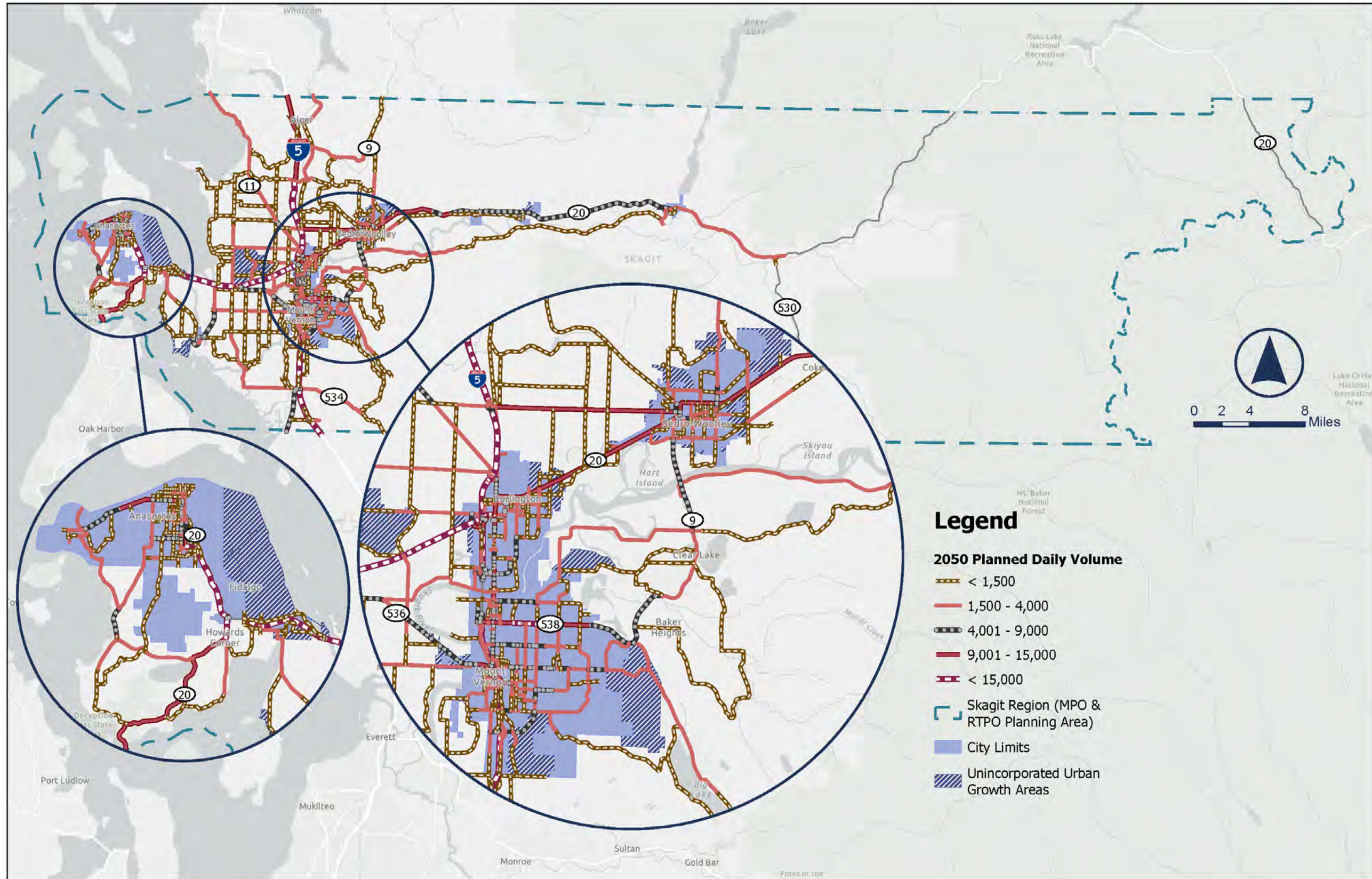


Figure 6. 2050 (Planned) LOS (PM Peak Hour)

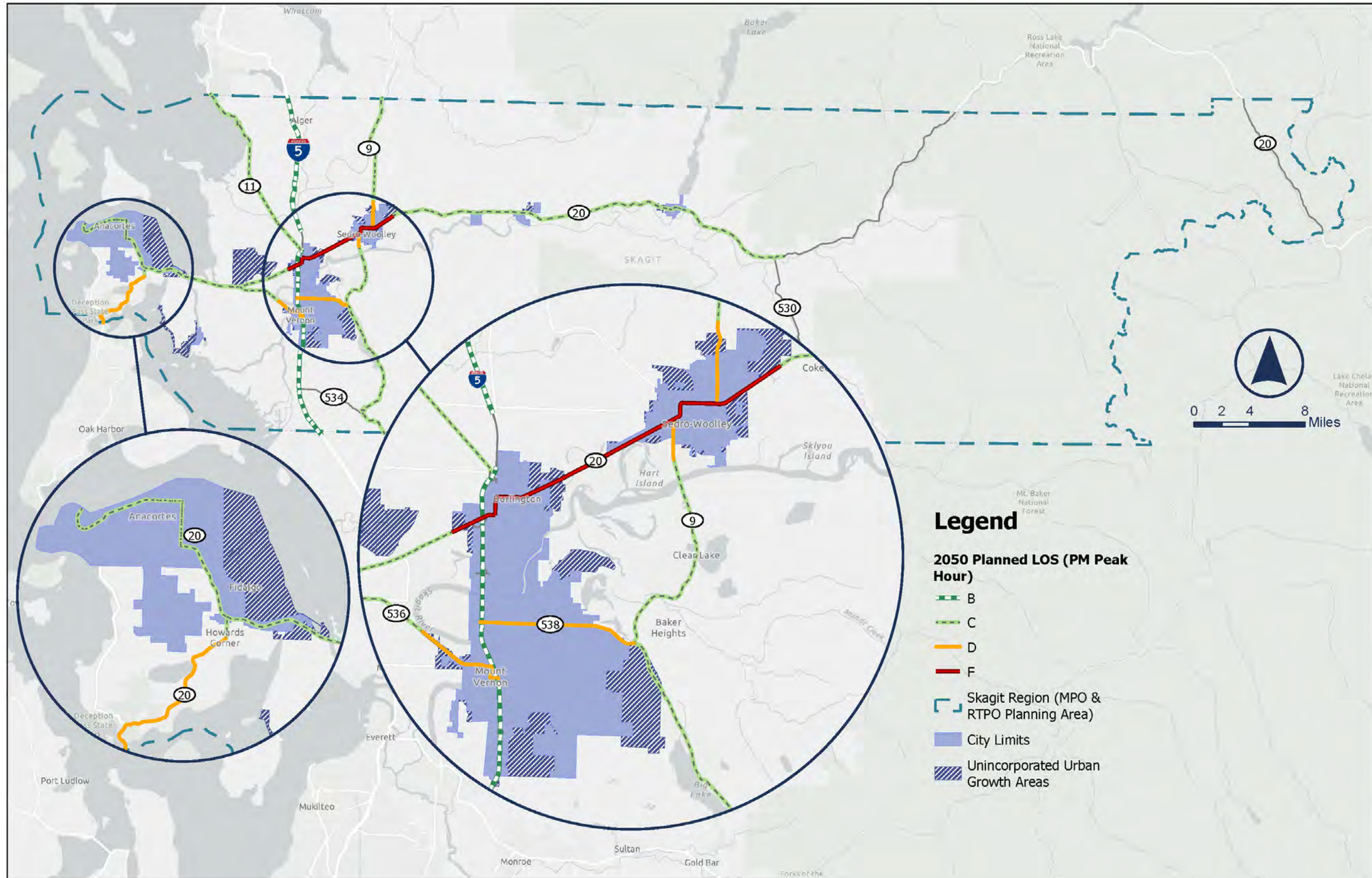


Figure 7. 2050 (Illustrative) Volumes (Daily)

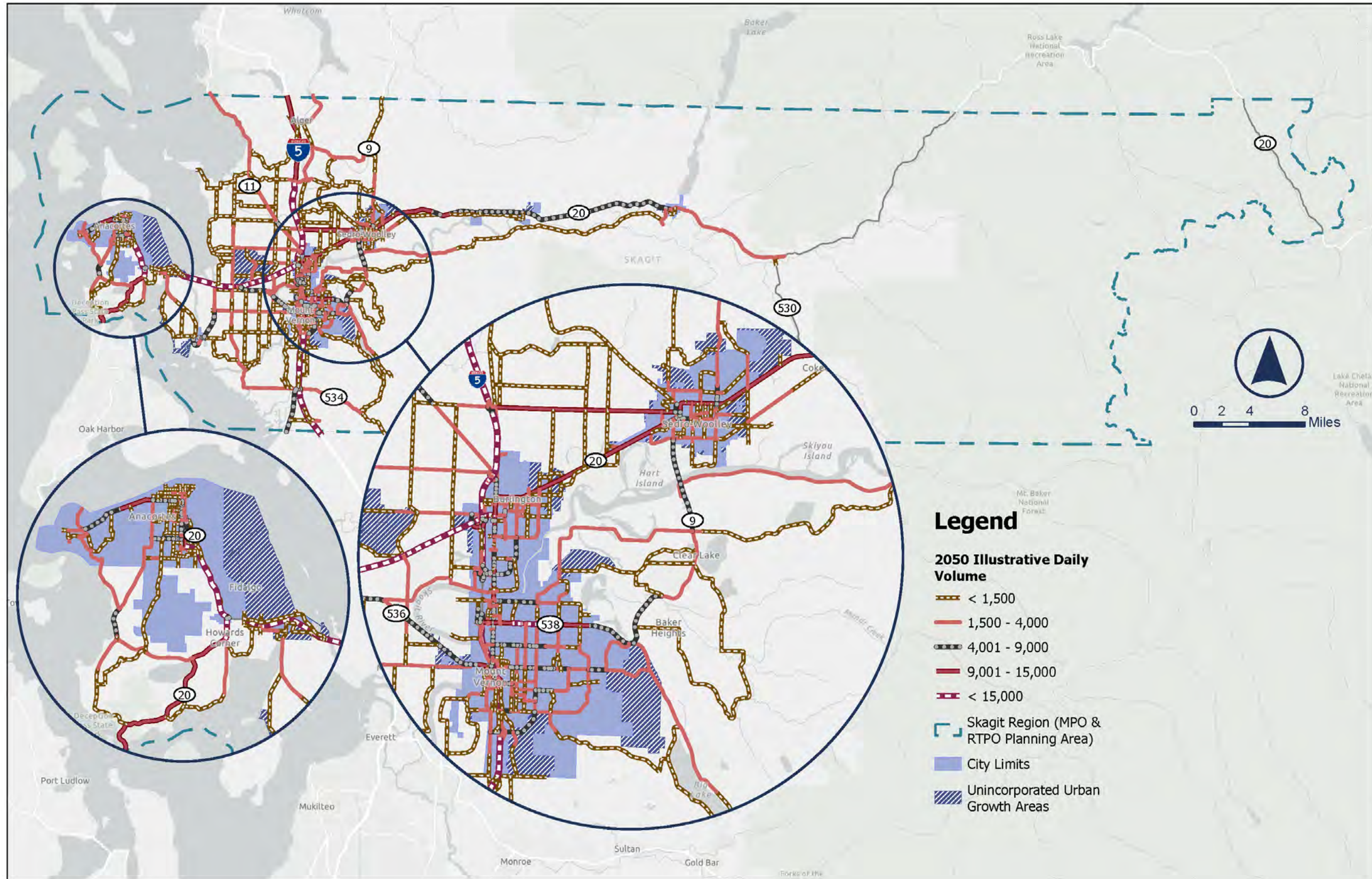


Figure 8. 2050 (Illustrative) LOS (PM Peak Hour)

